

Product Data Sheet

PS-001446, Rev. B

August 2012

ProLink[®] III Software A Configuration and Service Tool for Micro Motion[®] Transmitters

Micro Motion[®] ProLink[®] III is a Microsoft[®] Windows-based application for the configuration, service and support of Micro Motion Coriolis mass flow meters. ProLink III is an easy-to-use, intuitive application that simplifies the most complex configuration and diagnostic tasks associated with the Micro Motion meter.



World class configuration, service, and troubleshooting tool

- Supports all Micro Motion Coriolis meter transmitter types
- Management and simulation of configuration files

Intuitive display of process variables and diagnostics

- Enhanced data logging functionality, both on demand or time based
- Graphical process variable trending views

Multiple protocol and device-type support

- Supports HART, Modbus RS-485, and Modbus/TCP communications
- Simultaneously connect to multiple devices
- Process variable comparison tool for evaluating multiple devices simultaneously



Micro Motion® ProLink® III Configuration and Service Software

About ProLink® III

ProLink® III delivers all the power and flexibility you need to configure and manage Micro Motion® transmitters and analyze process data. ProLink III provides an easy-to-use interface that allows you to have your Micro Motion meter up and running quickly no matter how complex your configuration or diagnostic needs are.

Micro Motion designed ProLink III with your goals in mind. ProLink III provides an intuitive, dashboard-like interface where you can simultaneously access all the information you may need to assess your meter's health. You can easily see your process variables and alert conditions from a single screen. And, you can view detailed information about the raw signals being processed by a device, such as drive gain and pickoff values. This kind of information can be extremely helpful when troubleshooting transmitter behavior, which minimizes expensive downtime.

ProLink III also provides configuration capabilities that allow you to share configuration information from one transmitter to another. Or, you can pre-configure a transmitter prior to making a physical connection. With features like these, you can more efficiently manage the set up and commissioning of your Micro Motion device.

Advantages

- Intuitive interface for clear, concise data portrayal
- Improved connectivity through HART, Modbus and Modbus/TCP support
- Goal-oriented interface design that streamlines meter interrogation work practices
- Improved process control capabilities through online process variable trending tool
- Capability to diagnose meters remotely using Modbus/TCP connection
- Capability to characterize process interdependencies through simultaneously viewing multiple meter outputs
- Reduced time connected to meters in hazardous areas through offline configuration
- Transmitter simulation that allows you to understand a meter's capabilities and functions without a physical device connection
- Easily view calibration and configuration data in a printable report that allows you to quickly reference a transmitter's setup
- Guided connection tool with a drag-and-drop interface that allows you to easily configure your device connection

Contents

ProLink III versions – Basic or Professional.	3	Device simulation for a quick view into meter capabilities.	7
ProLink III – A clear window into your process . . .	4	Support for advanced transmitter applications . . .	8
Easily configure your transmitter from a single access point.	4	ProLink III installation kits	8
Easy access to alerts for viewing and acknowledgment	5	System requirements	8
Simultaneously connect to multiple devices	6	Supported transmitters	8
Monitor system performance with trending and data logging.	6	Communication protocols	8
Offline configuration tool to facilitate transmitter setup	7	Ordering information	9

ProLink III versions – Basic or Professional

You have two options for purchasing ProLink III: as a Basic edition or a Professional edition. Following are the features available in each edition of ProLink III.

Feature	Basic	Professional
Full transmitter configuration	✓	✓
Alert notifications	✓	✓
Alert resolution guide	✓	✓
Diagnostics/inputs/outputs display	✓	✓
Smart Meter Verification launch	✓	✓
Load or save device configurations	✓	✓
Smart Meter Verification reports		✓
Process variable trending (one or more devices)		✓
Offline configuration management		✓
Device simulation		✓
Data logging		✓
Multidevice comparison tool		✓
Guided process support tools		✓
Modbus/TCP		✓

ProLink III – A clear window into your process

ProLink III offers a clear, reliable view of your key process information from one main display screen. ProLink III can help you to manage your system process variables more efficiently – saving you time when investigating process problems – and reducing the need for physically viewing the local transmitter displays. Regardless of how you have configured your transmitter outputs, ProLink III displays all the process variable information that the transmitter has available, including totalizer and inventory data.

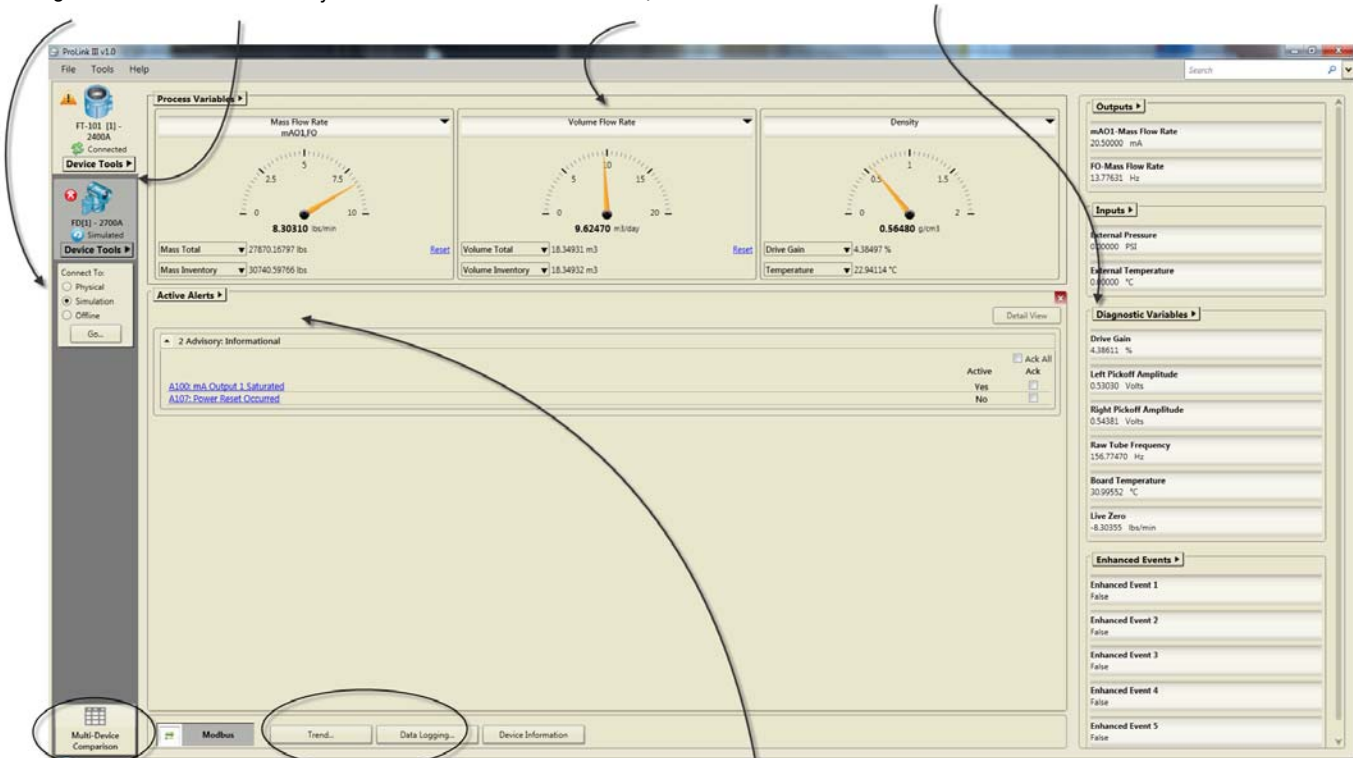
Easily configure your transmitter from a single access point

With ProLink III, you can quickly navigate to the settings you need because all configuration information is accessible from a single access point. ProLink III immediately communicates configuration changes to the transmitter, which allows you to evaluate the effect of your changes and pick the right settings for your process. Additionally, you can save and load configurations to/from a file on your computer, allowing convenient set up of one or multiple devices. This same feature also allows you to choose the data transferred between devices, and provides a convenient method for backing up your transmitter configuration.

Simulate a device or create an offline configuration.

Connect to and navigate between multiple devices simultaneously.

At a glance, you can quickly see your key process variables and diagnostics data – allowing you to better manage your system performance.



Compare the performance of connected devices for more streamlined meter interrogation.

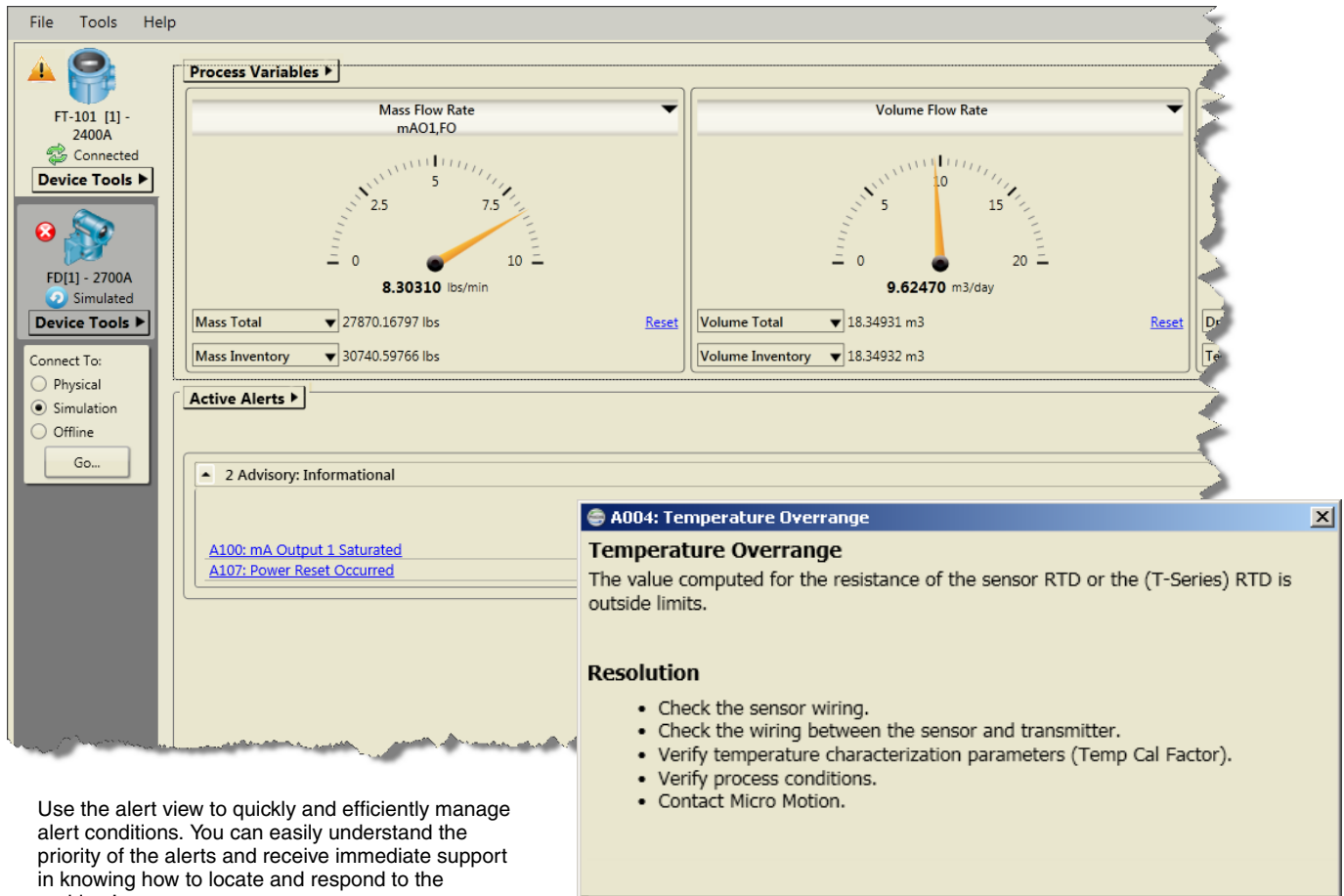
Monitor meter performance by charting process trends and logging system data.

Easy access to active alerts, and receive immediate support in understanding how to respond to the issue(s).

Easy access to alerts for viewing and acknowledgment

Alert conditions are displayed by ProLink III on the main screen when you first connect to a device. This first view into the process makes alert handling and troubleshooting a fast and efficient process. Alert information is separated by severity so that you can quickly understand and prioritize remedial actions.

In addition, you have one-click access to alert information to help you quickly locate and respond to the source of the problem.



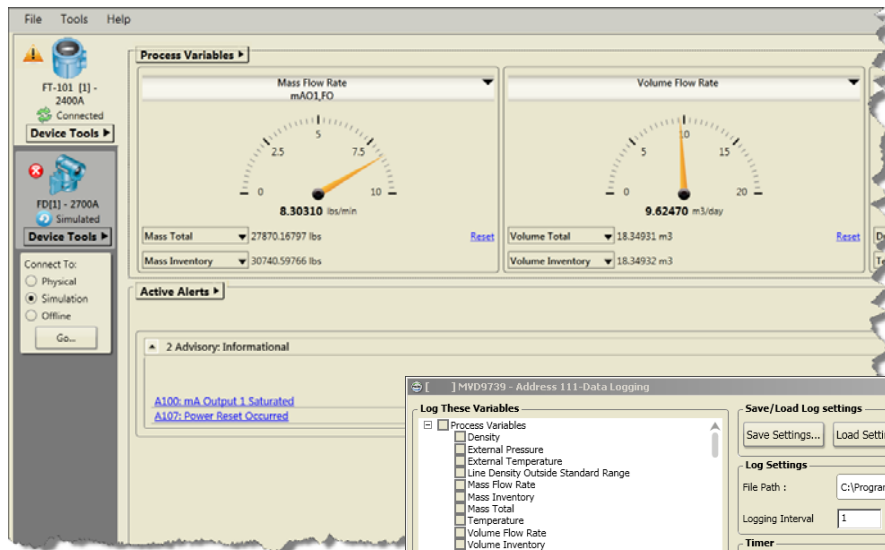
The screenshot displays the ProLink III software interface. On the left, there is a sidebar with a menu for 'Device Tools' and a 'Connect To:' section with radio buttons for 'Physical', 'Simulation' (selected), and 'Offline', along with a 'Go...' button. The main area is divided into two sections: 'Process Variables' and 'Active Alerts'. The 'Process Variables' section contains two gauges: 'Mass Flow Rate' (mAO1,FO) showing 8.30310 lbs/min and 'Volume Flow Rate' showing 9.62470 m3/day. Below the gauges are dropdown menus for 'Mass Total' (27870.16797 lbs), 'Mass Inventory' (30740.59766 lbs), 'Volume Total' (18.34931 m3), and 'Volume Inventory' (18.34932 m3), each with a 'Reset' button. The 'Active Alerts' section shows '2 Advisory: Informational' alerts, with links for 'A100: mA Output 1 Saturated' and 'A107: Power Reset Occurred'. A pop-up window titled 'A004: Temperature Overrange' is open, displaying the alert details: 'Temperature Overrange', 'The value computed for the resistance of the sensor RTD or the (T-Series) RTD is outside limits.', and a 'Resolution' section with a bulleted list of actions: 'Check the sensor wiring.', 'Check the wiring between the sensor and transmitter.', 'Verify temperature characterization parameters (Temp Cal Factor).', 'Verify process conditions.', and 'Contact Micro Motion.'

Use the alert view to quickly and efficiently manage alert conditions. You can easily understand the priority of the alerts and receive immediate support in knowing how to locate and respond to the problem's source.

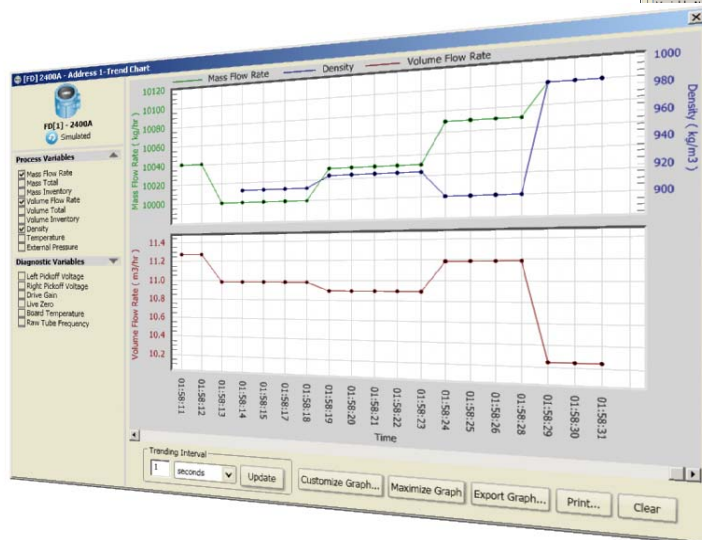
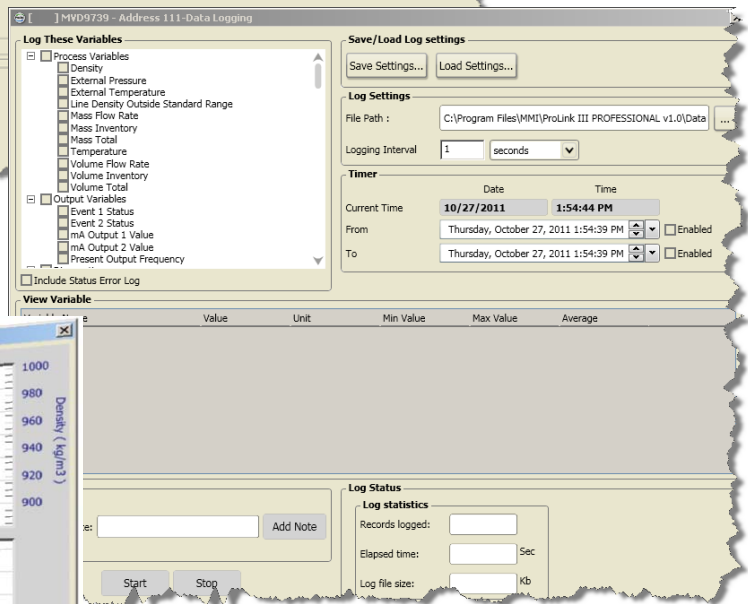
Simultaneously connect to multiple devices

You can simultaneously connect to multiple devices in your process. This feature allows you to more easily view your system performance and troubleshoot process conditions across more than one transmitter. Additionally, ProLink III provides a multidevice comparison tool that allows you to view the performance of each connected device from one main screen – making meter monitoring more efficient and less cumbersome than having to connect to each device separately. A common application of this feature is verifying the performance of a test meter against a known performance meter under the same process conditions.

When connected to multiple devices, you can easily navigate between the different transmitters by selecting or clicking on the desired transmitter tab. The highlighted tab shows the active device.



Use trending and datalogging to track and monitor what is happening in your process.



Offline configuration tool to facilitate transmitter setup

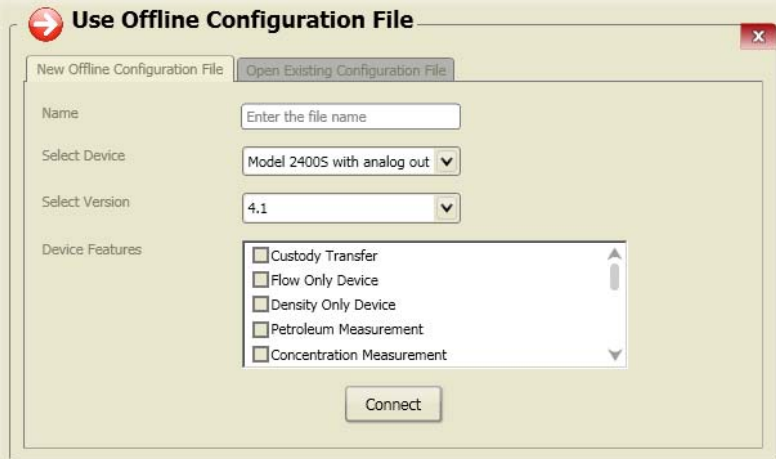
With offline configuration, you can create or edit a transmitter configuration file without the need for a physical connection to your device. This feature allows efficient management of configurations before uploading them to a connected device.

Device simulation for a quick view into meter capabilities

With device simulation, you can simulate device performance to allow you to view and navigate the ProLink III interface without a true device connection. This feature provides a convenient way to understand the software features and know how to navigate the interface when making a transmitter connection.

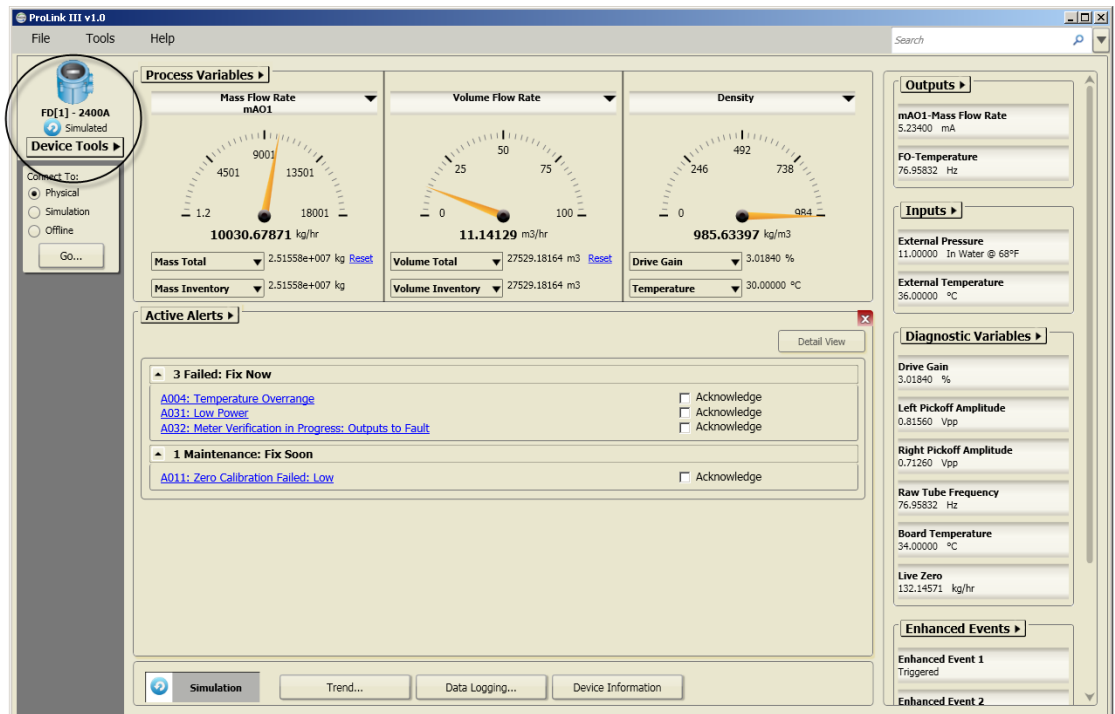
Creating an offline configuration

Choose to create an offline configuration and you can open an existing configuration file or create a new configuration file to more efficiently manage the set up of one or more devices.



Simulating a transmitter device

Device simulation allows you to simulate a connection to one or multiple devices. This feature provides a convenient way for you to navigate the ProLink III interface and understand the key features available.



Support for advanced transmitter applications

If the transmitter has advanced functionality such as Smart Meter Verification, concentration measurement, petroleum measurement, discrete batching, or filling & dosing software installed, you can configure these options in ProLink III. The appropriate menus or menu options are available in ProLink III if the options are supported by the transmitter.

ProLink III installation kits

ProLink III communicates serial data from your computer to the transmitter's RS-485 or HART terminals. To help you make this connection, you can purchase a ProLink III installation kit that contains the appropriate converter or adapter for your connection. Micro Motion recommends certain converters and adapters, which they have packaged in these kits for sale with ProLink III. Refer to the ordering information on page 9 for more information.

System requirements

Supported operating systems

For either 32-bit (x86) or 64-bit (x64) processor:

- Windows 7
- Windows Vista (with Service Pack 1 or later)
- Windows XP (with Service Pack 3 or later)

Hardware requirements

Processor	<ul style="list-style-type: none">• Pentium® 4 or higher• 1GHz minimum, 2 GHz or higher recommended
RAM	1 GB minimum, or 2 GB or higher recommended
Disk space	<ul style="list-style-type: none">• 1 GB for 32-bit (x86) Windows• 2 GB for 64-bit (x64) Windows
Video	<ul style="list-style-type: none">• 24-bit color graphics or higher• 1024 × 768 display minimum, 1280 × 800 or higher widescreen format preferred

Supported transmitters

Supported Micro Motion transmitters

Model 2200S
Model 2400S
Model 1700/2700
Model 1500/2500
MVD Direct Connect™
Series 3000 (MVD)
RFT9739
9739 MVD
LF-Series
IFT9701
IFT9703
RFT9712

Communication protocols

Protocol	Physical layer
HART	Bell 202 RS-485
Modbus	RS-485
Modbus/TCP	Ethernet

Ordering information

Model	Product description
PLK	ProLink III software
Code	ProLink version
0	ProLink II software (Windows XP & Vista) (See System requirements on page 8)
2 ⁽¹⁾	Upgrade from ProLink II to ProLink III Professional version
3	ProLink III software – Professional version
4 ⁽¹⁾	Upgrade from ProLink III Basic to ProLink III Professional
9	ProLink III software – Basic version (see ProLink III versions – Basic or Professional on page 3)
Code	License
U	Single user license (One copy of ProLink III on a single computer)
Code	Language
E	English
F ⁽⁵⁾	French
G	German
M	Chinese
S ⁽⁵⁾	Spanish
R	Russian
P ⁽⁴⁾	Portuguese
Code	Converter ⁽²⁾
A	None
V ⁽³⁾	RS-232 to Bell 202 HART converter
M ⁽²⁾⁽³⁾	RS-232 to RS-485 Modbus/HART converter
D ⁽³⁾	Both RS-232 to Bell 202 HART converter and RS-232 to RS-485 Modbus/HART converter (Options V & M)
E ⁽³⁾	USB to Bell 202 HART converter with integral cables
F ⁽³⁾	USB to RS-485 Modbus/HART converter with integral cables
G ⁽³⁾	USB to Bell 202 HART converter with integral cables and USB to RS-485 Modbus/HART converter and integral cables (Options E & F)
Typical model number: PLK 3 U E A	

(1) Requires a completed Declaration of Ownership from the prior version of ProLink; available as a software upgrade only.

(2) RS-232 and RS-485 adapters prior to 04/01/2001 are not compatible. The adapter must have 2-wire half-duplex asynchronous communications. For hardware upgrades of converters, order through spare parts. Contact Micro Motion Customer Support for more information.

(3) Only available with ProLink versions 0, 3, and 9.

(4) Not available with ProLink version 0.

(5) Only available with ProLink version 0.

Micro Motion—The undisputed leader in flow and density measurement



World-leading Micro Motion measurement solutions from Emerson Process Management deliver what you need most:

Technology leadership

Micro Motion introduced the first reliable Coriolis meter in 1977. Since that time, our ongoing product development has enabled us to provide the highest performing measurement devices available.

Product breadth

From compact, drainable process control to high flow rate fiscal transfer—look no further than Micro Motion for the widest range of measurement solutions.

Unparalleled value

Benefit from expert phone, field, and application service and support made possible by more than 750,000 meters installed worldwide and over 30 years of flow and density measurement experience.

 www.micromotion.com

© 2012 Micro Motion, Inc. All rights reserved.

The Emerson logo is a trademark and service mark of Emerson Electric Co. Micro Motion, ELITE, ProLink, MVD and MVD Direct Connect marks are marks of one of the Emerson Process Management family of companies. All other marks are property of their respective owners.

Micro Motion supplies this publication for informational purposes only. While every effort has been made to ensure accuracy, this publication is not intended to make performance claims or process recommendations. Micro Motion does not warrant, guarantee, or assume any legal liability for the accuracy, completeness, timeliness, reliability, or usefulness of any information, product, or process described herein. We reserve the right to modify or improve the designs or specifications of our products at any time without notice. For actual product information and recommendations, please contact your local Micro Motion representative.

Emerson Process Management Micro Motion Americas

Worldwide Headquarters
7070 Winchester Circle
Boulder, Colorado USA 80301
T: +1 800 522 6277
T: +1 (303) 527 5200
F: +1 (303) 530 8459
Mexico T: 52 55 5809 5300
Argentina T: 54 11 4837 7000
Brazil T: 55 15 3413 8147
Venezuela T: 58 26 1792 1858

Emerson Process Management Micro Motion Europe/Middle East

Central & Eastern Europe T: +41 41 7686 111
Dubai T: +971 4 811 8100
Abu Dhabi T: +971 2 697 2000
France T: 0800 917 901
Germany T: 0800 182 5347
Italy T: 8008 77334
The Netherlands T: +31 318 495 555
Belgium T: +32 2 716 77 11
Spain T: +34 913 586 000
U.K. T: 0870 240 1978
Russia/CIS T: +7 495 981 9811

Emerson Process Management Micro Motion Asia Pacific

Australia T: (61) 3 9721 0200
China T: (86) 21 2892 9000
India T: (91) 22 6662 0566
Japan T: (81) 3 5769 6803
Korea T: (82) 2 3438 4600
Singapore T: (65) 6 777 8211

For a complete list of contact information and websites, please visit: www.emersonprocess.com/home/contacts/global.

